

## Double Ended Shear Beam for compression force, high accuracy, up to 200klb

with electrical output



### Description

Force transducer F3252 is a double ended shear beam and is available in rated loads from 25 klb to 200 klb (11 t to 90 t).

The use of adhesive-sealed alloy steel allows trouble free use even in harsh environments.

The low-profile design combined with innovative introduction of force endow this force transducer with significant advantages for use in scales and for force measurements of all kinds.

### Note

It must be ensured that the supporting surface is level when installing the force transducer.

### Features

- High precision
- Alloy steel version, robust design
- Protection class IP 67
- Low-profile design
- Optimal load input
- High input resistance: 700  $\Omega$

### Measuring range

- 25 klb to 200 klb

### Applications

- Force measurement
- Weighing applications
- Platform scales
- Production lines
- Testing and manufacturing plants

### Specific information

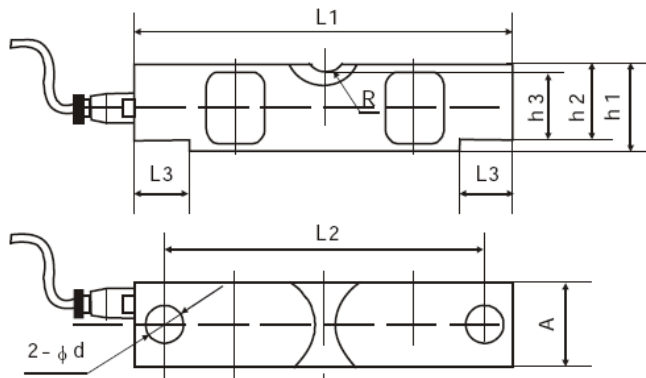
- Load input elements available (option)

**Model: F3252**

## Technical specifications

Model	F3252	Options
Nominal load $F_{nom}$ Metric equivalents (1 klb = 0,45359 t)	25 / 40 / 50 / 60 / 75 / 100 / 125 / 150 / 200 klb 11 / 18 / 22 / 27 / 34 / 45 / 56 / 68 / 90 t	
Limit load $F_{nom}$	150 % $F_{nom}$	
Breaking load	> 300 % $F_{nom}$	
Combined error	$\leq \pm 0.02\%$ of F.S.	
Non-Linearity	$\leq \pm 0.017\%$ of F.S.	
Creep (30 min. at $F_{nom}$ )	$< \pm 0.03\%$ of F.S.	
Nominal temperature range	-10...+40°C	
Service temperature range	-35...+65°C	
Storage temperature range	-40...+80°C	
Temperature effect		
- span	$\leq \pm 0.014\%$ of F.S. /10 K	
- zero	$\leq \pm 0.017\%$ of F.S. /10 K	
Protection type (acc. to 60 529/ IEC 529)	IP 67	
Insulation resistance	> 5 G $\Omega$ / 50 V	
Analogue output		
- Output signal	3 mV/V	
- Bridge resistance	Input: 700 $\pm$ 7 $\Omega$ Output: 700 $\pm$ 7 $\Omega$	
- Tolerance of span	$\leq \pm 0.1\%$ of F.S.	
- Zero	$\leq \pm 1\%$ of F.S.	
- Excitation voltage	5 V ... 15 V	
- Electrical connection	Cable 9 m, 4-wire, shielded, PU	
Material	Alloy steel , adhesive-sealed	Stainless steel

## Dimensioned drawings



Electrical connection	Colour
Supply (-)	Black
Supply (+)	Red
Signal (+)	Green
Signal (-)	White

Capacity(Klb)	L1	L2	L3	h1	h2	h3	A	d	R
25	197 (7.75)	165 (6.50)	35 (1.38)	49.3 (1.94)	43.2 (1.70)	41.4 (1.63)	43 (1.70)	17.3 (0.68)	19.1 (0.75)
40	260.4 (10.25)	216 (8.50)	49.3 (1.94)	62 (2.44)	53.3 (2.10)	50.8 (2.00)	49.3 (1.94)	20.6 (0.81)	25.4 (1.00)
50-75	260.4 (10.25)	216 (8.50)	49 (1.93)	74.7 (2.94)	67.3 (2.65)	64.5 (2.54)	62 (2.44)	26.9 (1.06)	25.4 (1.00)
100-125	387.4 (15.25)	324 (12.76)	79.5 (3.13)	98 (3.86)	87.1 (3.43)	83.8 (3.30)	73.7 (2.90)	41.2 (1.62)	38.1 (1.50)
150-200	489 (19.25)	387.4 (15.25)	127.8 (5.03)	147.3 (5.80)	130.1 (5.12)	112.8 (4.44)	96.5 (3.80)	41.2 (1.62)	50.8 (2.00)

Dimensions in mm (inches).  
Subject to technical change without prior notice.