

UHP Flow-Through-Gauge Diaphragm Pressure Gauge, Nominal Size 2" Model 432.25 (FTG)

WIKA Data Sheet PM 04.12

Applications

- Suitable for gaseous, liquid and corrosive media, also in a corrosive environment, for demanding high purity applications.
- Semiconductor and flat panel industry
- Gas distribution systems
- Medical gases
- Hook-up-application



Special Features

- No dead volume in the pressure gauge
- Low internal volume for reducing particle generation and entrapment
- Helium leak tested, leak rate $\leq 10^{-9}$ mbar · l/s
- Electropolished internals and case, internal surface finish $R_a \leq 0,25 \mu\text{m}$
- All high purity connections available

UHP Flow-Through-Gauge, Model 432.25.2" (FTG)

Description

Nominal size

2"

Accuracy class

Grade B according to ASME B40.1
accuracy higher on request

Scale ranges

-1 ... 4 bar / -30 inHg ... 60 psi
-1 ... 9 bar / -30 inHg ... 130 psi

Operating temperature

Ambient: -10 ... +60 °C
Medium: +60 °C maximum

Pressure connection

All UHP connections available

Pressure element

Inconel

Dial

White aluminium,
with black/red lettering, dual pressure scale (bar/psi)

Pointer

Black aluminium

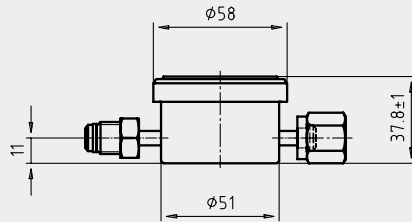
Case

Material: stainless steel 316L, electropolished

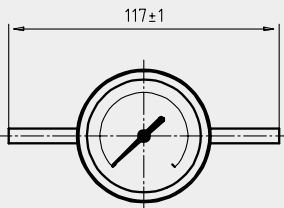
Window

One piece polycarbonate screw-on

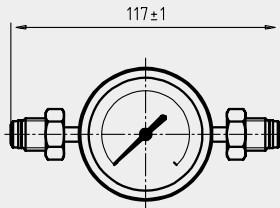
Dimensions in mm



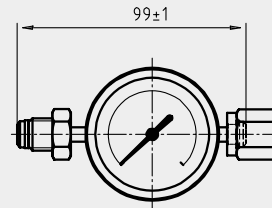
Process connection



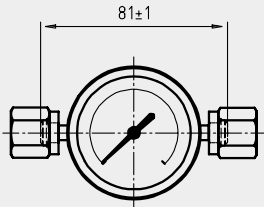
O.D. tube
Order code: W4W4



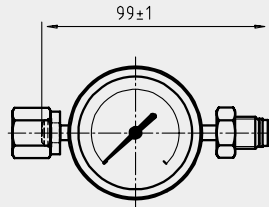
1/4" Face seal swivel male
Order code: M4M4



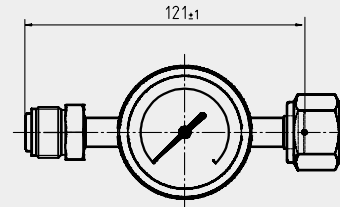
1/4" Face seal swivel male / Face seal swivel female
Order code: M4F4



1/4" Face seal swivel female
Order code: F4F4



1/4" Face seal swivel female / Face seal swivel male
Order code: F4M4



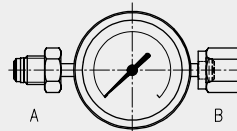
1/2" Face seal swivel male / Face seal swivel female
Order code: M8F8

Order code for scale ranges

Scale ranges	Order code
-1 ... 4 bar / -30 inHg ... 60 psi	S3B
-1 ... 9 bar / -30 inHg ... 130 psi	S4B

Mounting position

Horizontal mounting



Order code: 1

Vertical mounting



Order code: 2

Order code

Model	Process connection	Scale range	Mounting position
FTG	<input type="text"/>	- <input type="text"/>	- <input type="text"/>

Modifications may take place and materials specified may be replaced by others without prior notice. Specifications and dimensions given in this leaflet represent the state of engineering at the time of printing.



WIKAL Alexander Wiegand GmbH & Co. KG
 Alexander-Wiegand-Straße 30
 63911 Klingenberg/Germany
 Phone (+49) 93 72/132-0
 Fax (+49) 93 72/132-406
 E-Mail info@wika.de
 www.wika.de